

**“Certificate In Project Management (CIPM) is unique and should become a must for professionals of an enterprise to create a common vocabulary”**

- Dr. Hiroshi Tanaka, President, Project Management Association, Japan and PM Advocate of JGC Corporation

**“Certificate In Project Management (CIPM) is a major step forward for the PM profession”**

- Dr. Vladimir Voropajev, President, Russia Project Management Association

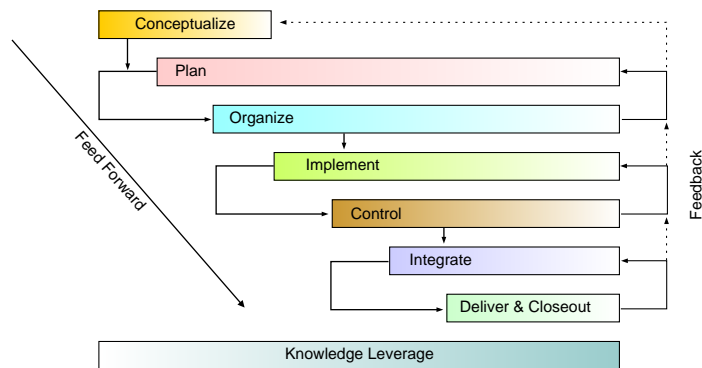
**Creating a common Project Management Language (PML) across an enterprise**



## CERTIFICATE IN PROJECT MANAGEMENT (CIPM)

*building professionalism in managing change*

**CIPM has Eight comprehensive & unique Project Life Cycle Phases based on double control loops of feed forward and feedback**



**CIPM helps you to:**

- Keep yourself ahead of others as well as peers
- Increase your knowledge & competence
- Enhance your career growth
- Get global recognition

Employees of over 300 companies have/are acquiring the Certificate In Project Management (CIPM). Some of the key companies are:



28 Academic Institutions offer CIPM credential to their MBA / Final Year Engg. students. Some of them are:

- Indira Gandhi National Open University
- Central Road Research Institute (CRRI)
- ITM Business School
- SRM University
- Fortune Institute of International Business
- SAS Group of Institutions
- International Management Institute (IMI)
- Fore School of Management
- Asia Pacific Institute of Management
- Vel-Tech Dr RR & Dr SR Tech University
- Adani Institute of Infrastructure Management
- SUS Group of Institutions
- IMT, Ghaziabad
- Int'l. Instt. of Health Management Research
- University of Petroleum & Energy Studies
- Institute of Public Enterprises (IPE)
- The Business School, Kashmir University
- Inderprastha Engineering College

**Three modes of delivery to prepare for CIPM – ■ Internet based ■ CD based ■ Classroom (5 days) based**



# Certificate In Project Management (CIPM)

[www.pmGURUonline.com](http://www.pmGURUonline.com), a 24x7, internet based online training site provides comprehensive knowledge delivery of hard and soft skills, tools and methods for managing projects. [pmGURUonline.com](http://pmGURUonline.com) provides highly rated training for project management certification preparation.

## Why get certified?

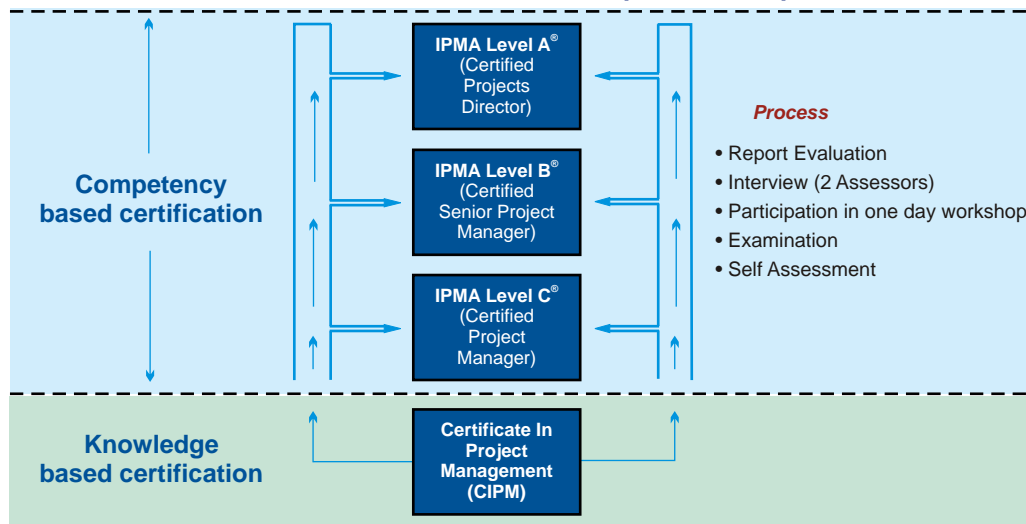
Getting certified is crucial in today's global scenario and the number of certified persons in project management is growing exponentially world-wide. Project Management is now emerging as a discipline. For every discipline, you need qualification & certification.

**CIPM** certification helps you to acquire the latest skills and knowledge in the field of Project Management and to show that you possess these qualifications. It is beneficial for both experienced as well as entry level persons across all sectors and disciplines. Today, Managing by Project (MBP) is the key to economic growth and a company's competitiveness.

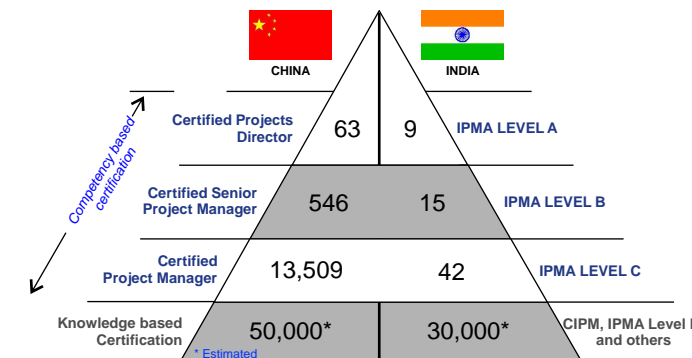
## Benefits of Project Management Certification

- Project management certification improves one's capability to deliver products and services faster, cheaper & better.
- Project management certification ensures that you have standards by which project management performance can be measured.
- It helps significantly to provide confidence to clients that the company can handle the clients' business efficiently and cost effectively.
- It demonstrates your ability to manage projects effectively.
- It assists in the recognition of the transferability of an individual's skills from one company or industry to another.
- Through participation in the certification process, individuals enhance their confidence in their project management and general business knowledge.

## From CIPM to IPMA Level A – a complete career path



## Comparison between China and India (as on 01 January 2011). We must bridge this huge gap specially at Competency based certification



Some of the companies leading the race in certifying their employees with the Certificate In Project Management (CIPM) credential are: NTPC Ltd., L&T Group, Genpact, Indian Oil Corporation, BPCL, NHPC, Power Grid Corpn., NEEPCO, Lanco, Jindal Steel & Power, Punj Lloyd, Areva, Adani Infrastructure and BHEL.

# Syllabus for Certificate In Project Management (CIPM)



Covering **Eight Project Life Cycle Phases (PLC)**, **36 Knowledge Areas** and **112 PM Concepts** shown by • **bullets**

Project Life Cycle 1 - Conceptualize		Project Life Cycle 2 - Plan (contd.)		Project Life Cycle 5 - Control (contd.)	
<b>1 Stakeholders</b>	<ul style="list-style-type: none"> <li>Stakeholder Requirements</li> </ul>	<b>9 Health, Security, Safety &amp; Environment</b>	<ul style="list-style-type: none"> <li>Health &amp; Safety</li> </ul>	<b>23 Change</b>	<ul style="list-style-type: none"> <li>Change management concepts</li> <li>The need for Change control</li> <li>Formal Change control procedures</li> </ul>
<b>2 Business Case</b>	<ul style="list-style-type: none"> <li>Need Analysis Cycle</li> <li>Business Case Concepts</li> <li>Contents of Business Case</li> <li>Investment Appraisal</li> <li>PESTLE Analysis</li> <li>Project Charter</li> </ul>	<b>10 Quality Considerations</b>	<ul style="list-style-type: none"> <li>Quality Philosophy</li> <li>What is Quality</li> <li>Cost of Quality</li> </ul>	<b>24 Information Management &amp; Reporting</b>	<ul style="list-style-type: none"> <li>Meetings</li> <li>Information Management Fundamentals</li> <li>Estimate at completion (Cost)</li> <li>Estimate to complete (Time)</li> </ul>
<b>Project Life Cycle 2 - Plan</b>		<b>11 Risk &amp; Opportunity</b>	<ul style="list-style-type: none"> <li>Risk vs. Project Life Cycle</li> <li>Risk Identification</li> <li>Risk assessment</li> </ul>	<b>25 Team Performance</b>	<ul style="list-style-type: none"> <li>Motivation Theories</li> <li>Conflict Resolution</li> </ul>
<b>3 Planning Management</b>	<ul style="list-style-type: none"> <li>Why Plan?</li> <li>Types of Plan</li> </ul>	<b>Project Life Cycle 3 - Organise</b>		<b>Project Life Cycle 6 - Integrate</b>	
<b>4 Start Up</b>	<ul style="list-style-type: none"> <li>Need for proper start up</li> </ul>	<b>13 Internal and External Interfaces</b>	<ul style="list-style-type: none"> <li>Role of Interfaces</li> </ul>	<b>26 Conformance</b>	<ul style="list-style-type: none"> <li>Ensuring Conformance</li> </ul>
<b>5 Success Criteria</b>	<ul style="list-style-type: none"> <li>Success Criteria</li> </ul>	<b>14 Roles &amp; Responsibilities</b>	<ul style="list-style-type: none"> <li>What is HR?</li> <li>Roles, Duties and Responsibilities</li> <li>Responsibility Assignment Matrix</li> </ul>	<b>27 Problem Solving</b>	<ul style="list-style-type: none"> <li>Problem Solving</li> </ul>
<b>6 Scope Definition</b>	<ul style="list-style-type: none"> <li>Scope Philosophy</li> <li>Product/ Service Description</li> <li>Scope Planning</li> <li>Scope Statement</li> <li>Scope Definition High Level</li> <li>Work Breakdown Structure</li> <li>Work Package</li> <li>Scope Management Plan</li> </ul>	<b>15 Organisation Structures</b>	<ul style="list-style-type: none"> <li>Types of Organization Structures</li> </ul>	<b>28 Project Integration</b>	<ul style="list-style-type: none"> <li>Project definition</li> <li>Manage project plan</li> <li>Manage project execution</li> <li>Monitoring and control</li> </ul>
<b>7 Time Management</b>	<ul style="list-style-type: none"> <li>More about WBS</li> <li>Overview of Networks</li> <li>Project Network Diagrams</li> <li>What is an Activity?</li> <li>Arrow Diagramming Method (ADM)</li> <li>Precedence Diagramming Method (PDM)</li> <li>Program Evaluation and Review Technique (PERT)</li> <li>Duration estimates</li> <li>Logical relationships and dependencies</li> <li>Lead &amp; Lag</li> <li>Early start and early finish</li> <li>Late start and late finish</li> <li>Critical path</li> <li>Float</li> <li>Project Network Analysis</li> <li>Gantt Charts</li> </ul>	<b>16 Information System</b>	<ul style="list-style-type: none"> <li>Communication Process</li> </ul>	<b>29 Product Integration</b>	<ul style="list-style-type: none"> <li>Integration platform</li> <li>Sequence for integration</li> <li>Evaluate products</li> </ul>
<b>8 Cost &amp; Finance</b>	<ul style="list-style-type: none"> <li>Cost Estimating</li> <li>Cost Baseline</li> </ul>	<b>Project Life Cycle 4 - Implement</b>		<b>30 Integration Effectiveness</b>	<ul style="list-style-type: none"> <li>Priority setting</li> <li>Issue histogram</li> <li>Documentation</li> </ul>
		<b>17 Risk Management</b>	<ul style="list-style-type: none"> <li>Risk Reassessment &amp; Monitoring</li> <li>Risk Register</li> </ul>	<b>31 Project/Product Delivery</b>	<ul style="list-style-type: none"> <li>Delivery checklist</li> <li>Project acceptance</li> </ul>
		<b>18 Teamwork</b>	<ul style="list-style-type: none"> <li>Types of Teams</li> <li>Characteristics of Teams</li> <li>Team Building</li> <li>Barriers to Communication</li> <li>Ethics</li> </ul>	<b>Project Life Cycle 7 - Deliver &amp; Closeout</b>	
		<b>19 Issue Management</b>	<ul style="list-style-type: none"> <li>Issue Logs</li> </ul>	<b>33 Contract Administration</b>	<ul style="list-style-type: none"> <li>Contract Administration</li> <li>Project/Product Warranties</li> </ul>
		<b>20 Procurement</b>	<ul style="list-style-type: none"> <li>The need for procurement</li> <li>Procurement Planning</li> <li>Contracting</li> </ul>	<b>33 Close out</b>	<ul style="list-style-type: none"> <li>Purchase order Close Out</li> <li>Contract Close Out</li> <li>Resource Close Out</li> <li>Legal Close Out</li> <li>Project Close Out report</li> </ul>
		<b>Project Life Cycle 5 - Control</b>		<b>34 Post Project Evaluation</b>	<ul style="list-style-type: none"> <li>Project evaluation</li> </ul>
		<b>21 Issue Analysis</b>	<ul style="list-style-type: none"> <li>Issue Analysis</li> </ul>	<b>Project Life Cycle 8 - Knowledge Leverage</b>	
		<b>22 Quality</b>	<ul style="list-style-type: none"> <li>Statistical Quality Control</li> <li>Histogram</li> <li>Pareto Diagram</li> <li>Cause and Effect</li> <li>Flow Charts</li> <li>Benchmarking</li> </ul>	<b>35 Project</b>	<ul style="list-style-type: none"> <li>What is a Project?</li> <li>Operations vs. Projects</li> </ul>
				<b>36 PM Fundamentals</b>	<ul style="list-style-type: none"> <li>Why Modern PM is the Key discipline?</li> <li>Historical Perspective</li> <li>Project Management</li> <li>Triple Constraints</li> <li>Project Life Cycle</li> <li>Uncertainties vs. life cycle</li> <li>Value addition vs. life cycle</li> <li>Cost of change vs. life cycle</li> <li>Amount at stake vs. life cycle</li> <li>Critical Chain</li> <li>Organisation PM Maturity Models</li> </ul>

## Why CIPM?

**CIPM** is a special certificate in project management meant for all persons across all sectors covering both experienced persons to entry level persons. It is a valuable certificate to enhance your career.

**CIPM** will provide extensive knowledge and skill of PM tools and techniques to all candidates to improve their management of Time, Cost, Quality, Plan for Risks, Information and address people issues like Communication, Team Building, Motivation, Conflict Resolution etc.

There are three modes to prepare for the CIPM Exam.

**Mode 1** involves a 35 hour Internet based study program through pmguruonline.com available 24x7 from any location, so candidates can study at their own convenience. The 35 hours must be completed in 60 days from the date of the first login.

**Mode 2** is CD based and one can use a computer for training without Internet.

**Mode 3** is classroom based 5 days training.

**Meant for** : For both experienced professionals as well as entry level executives who want to understand the intricacies of Project Management and advance their career.

**Eligibility** : Graduate in any field.

**Examination** : Paper / Pencil or Internet based exam to be administered by Institute of Project Management Certification (IPMC). Exam to be conducted at the nearest exam centre of IPMC or by HR department of the company.

## CIPM Exam Pattern

After completing the study you are ready to take the **CIPM** examination. The **CIPM** exam is administered by **Institute of Project Management Certification (IPMC)**, a non profit registered company. IPMC is the National Certification Body of Project Management Associates (PMA), Indian Member of IPMA which comprises of 55 countries from all the continents. IPMA has an agreement with IPMC for administering PM certification in India. The exam fee is separately payable to "Institute of Project Management Certification". **CIPM** exam fee is Rs. 2,500 for PMA members and Rs. 3,500 for non PMA members.

Examination is of 2 hours duration and consists of 4 Sections of multiple choice questions. Paper has 3 Types of questions – Type 1, Type 2 and Type 3. **In Type 1** questions, you are required to make 1 selection out of 4 choices. Each right answer carries **1 Mark**. **In Type 2** questions, you are required to make 1 selection out of 5 choices. Each right answer carries **2 Marks**. **In Type 3** questions, one needs to compute and then you are required to make 1 selection out of the 4 choices. Each right answer carries **5 Marks**.

It is necessary to obtain **50% marks** in each Section independently. It is also necessary to get overall **60% marks** of the maximum marks of 175 i.e.105. If a candidate fails in any one of the 4 Sections, he/she has to reappear in the **CIPM** Exam again. **There is negative marking of 25% of the marks assigned to the question.**

## Pricing Structure for Preparation of CIPM through www.pmGURUonline.com

**Internet Mode: Valid for 35 hours Log in time or 60 days valid from the first Log in date.**

Slab	Per User in INR*	Per User in US\$+
1 to 10 users	9,900	445
11 to 50 users	8,900	400
51 to 100 users	7,900	355
101 to 500 users	4,900	220
501 to 1000 users	4,300	195
1001 to 1500 users	3,400	155

\* Service tax included.

+ For users outside India

**Training Fee is payable to: Centre for Excellence in Project Management (P) Ltd., Noida**



Centre for Excellence in Project Management (P) Ltd.

is the Accredited Training Organisation (ATO) of IPMC

*For more details, contact:*

Ms. Ruchira Jain, IPMA-B, Managing Director, Centre for Excellence in Project Management (P) Ltd.

A 48, Sector 5, Noida 201301, India, Email: info@pmguruonline.com, rjain@cepm.com

Tel.:(+91-120) 242 0444 or 242 0463 or 99996 84621 Fax: (+91-120) 242 1484